

POS-Z-CAM SPECIFICATIONS AND DIMENSIONS

MODEL NO.	P375		P500		P750		P100		R187	
	INCH	METRIC	INCH	METRIC	INCH	METRIC	INCH	METRIC	INCH	METRIC
Maximum Material Thickness¹	1/16		1/16		1/16		1/8		1/8	
Max Work in Load (tons/kN)²	3	26	5	44	8	71	15	133	15	133
Punch Stroke										
S	.750	19.05	1.00	25.40	1.13	28.57	1.25	31.75	1.25	31.75
Point Diameter										
Z Diameter³	.375	10.00	.500	13.00	.750	20.00	1.000	25.00	1.875 sq.	48 sq.
A	4.25	107.95	5.13	130.17	5.75	146.05	6.75	171.45	6.75	171.45
B	4.00	101.60	4.75	120.65	5.38	136.52	6.25	158.75	6.25	158.75
C	3.13	79.38	3.63	92.07	3.88	98.42	4.63	117.47	5.635	142.88
D	.38	9.52	.38	9.52	.38	9.52	.50	12.70	.50	12.70
E	1.38	34.93	1.75	44.45	2.00	50.80	2.25	57.15	2.25	57.15
F	.093	2.36	.21	5.38	.50	12.70	.50	12.70	.50	12.70
G	.53	13.46	.64	16.70	1.13	28.60	.91	20.90	.25	6.40
H	2.00	50.80	2.50	63.50	3.00	76.20	3.50	88.90	3.50	88.90
I	1.50	38.10	1.88	47.62	2.25	57.15	2.63	66.68	2.63	66.68
J	1.062	26.99	1.187	30.150	1.500	38.100	1.688	42.875	.750	18.860
K	.25	6.35	.31	7.95	.38	9.52	.44	11.11	.44	11.11
L	4.25	107.95	5.38	136.52	6.13	155.57	7.13	180.97	6.38	161.92
M	1.75	44.45	2.38	60.32	2.88	73.02	3.38	85.72	3.38	85.72
N Keyway	1/4 x 9/64	6 x 3	5/16 x 5/32	10 x 5	3/8 x 3/16	10 x 5	1/2 x 1/4	16 x 8	1/4 x 1/2	16 x 8
O Keyway	1/4 x 9/64	6 x 3	1/4 x 9/64	6 x 3	5/16 x 5/32	8 x 4	3/8 x 3/16	10 x 5	3/8 x 3/16	10 x 5
P	3.50	88.90	4.25	107.95	4.63	117.47	5.50	139.70	4.75	120.65
Q	1.00	25.40	1.25	31.75	1.50	38.10	1.75	44.45	NA	NA
R	3.18	80.97	4.00	101.60	4.75	120.65	6.00	152.40	6.00	152.40
T	.50	12.70	.75	11.43	.88	22.22	1.13	28.57	1.13	28.57
U	1.81	46.04	2.25	57.15	2.63	66.67	3.00	76.20	3.00	76.20
V	.94	23.80	1.09	27.61	1.31	33.35	1.50	38.10	1.50	38.10
W (No.) & Dia.	(4) 1/4	(4) 6MM	(4) 1/4	(4) 8MM	(4) 5/16	(4) 8MM	(4) 3/8	(4) 10MM	(4) 3/8	(4) 10MM
X (No.) & Dia.	(2) 1/4	(2) 6MM	(2) 5/16	(2) 8MM	(2) 5/16	(2) 8MM	(2) 3/8	(2) 10MM	(2) 3/8	(2) 10MM
Y (No.) & Dia.	(2) 1/4 -20	(2) 6MM	(2) 1/4 - 20	(2) 6MM x 1.0	(2) 5/16 -18	(2) 8MM x 1.25	(2) 3/8 - 16	(2) 10MM x 1.5	(2) 3/8 - 16	(2) 10MM x 1.5

¹ Based on punching mild steel.

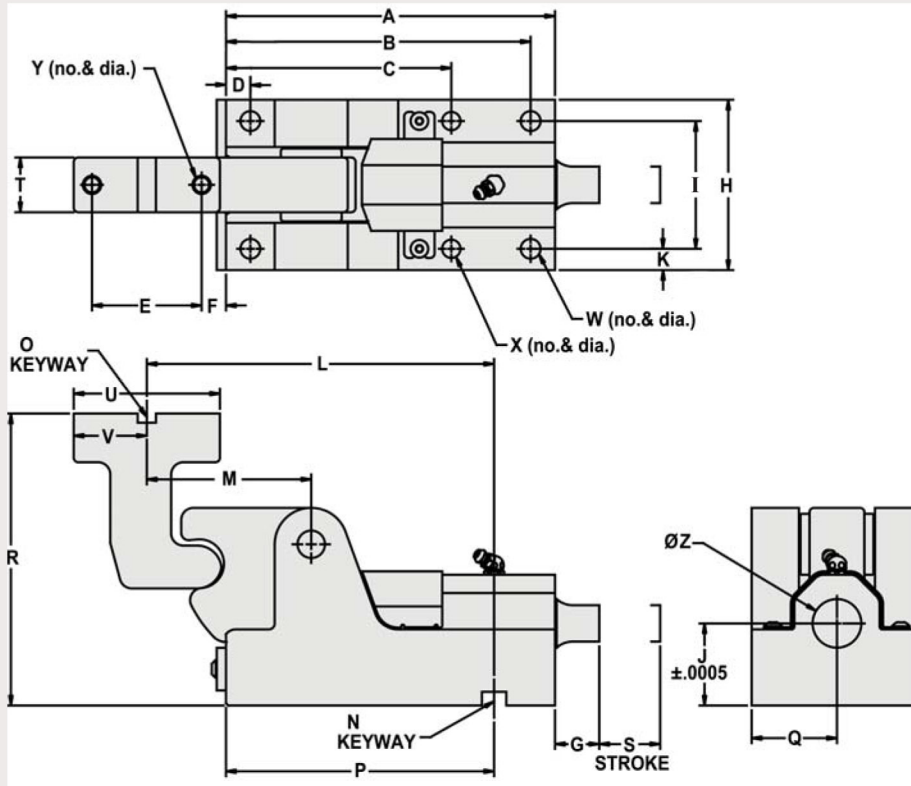
² Rated tonnage at the end of the stroke.

³ The diagonal of shaped punch points must be less than the maximum point diameter.

Specifications subject to change without notice.

Manufactured in U.S.A.

PIERCE CAM



RETAINER CAM

